

# GRAND MERCURE

IMPERIAL PALACE  
SEOUL GANGNAM

# GRAND MERCURE

IMPERIAL PALACE  
SEOUL GANGNAM

Follow our hotel on



640 Eon-ju Ro, Gangnam-gu, Seoul, South Korea  
Phone +82-2-3440-8000 | Fax +82-2-3440-8200 | E-mail [contact@iphotel.co.kr](mailto:contact@iphotel.co.kr)



## ABOUT US

Timeless Elegance, Endless Comfort

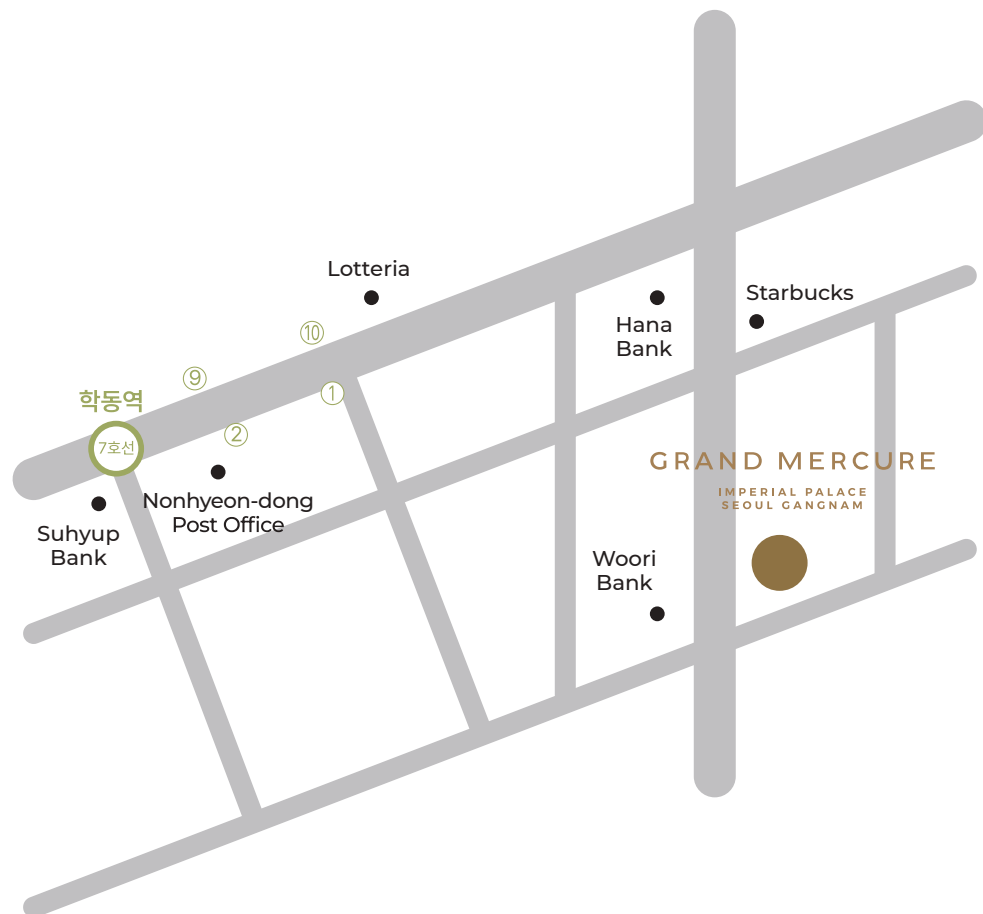
First opened as Amiga Hotel on September 18, 1989, Grand Mercure Imperial Palace Seoul Gangnam stands as a symbol of Korean hospitality, built on 100% domestic capital and a strong management philosophy. With decades of operational expertise and a guest-centric approach, the hotel has evolved beyond a place to stay, becoming a landmark where both local and international guests experience authentic Korean warmth and refinement.

In 2006, it became the first Korean hotel to receive the TIME Readers' Travel Choice Award, reaffirming its position as a globally recognized luxury hotel with exceptional service standards.

At Grand Mercure Imperial Palace Seoul Gangnam, each stay is enriched by culture and artistry. More than 400 curated works by Korean artists are displayed throughout the hotel, transforming every space into a meaningful journey that reflects Korea's traditions, craftsmanship, and contemporary spirit.

Inspired by classic elegance and reinterpreted with modern sophistication, the hotel's interiors create a calm and refined atmosphere. This visual experience is complemented by highly personalized service, thoughtfully tailored to each guest and rooted in genuine Korean hospitality.

Perfectly suited for both business and leisure, Grand Mercure Imperial Palace Seoul Gangnam offers an elegant retreat in the heart of Gangnam. Discover a five-star experience where culture, comfort, and attentive service come together to create memorable moments in Seoul.



## LOCATION

### Find Us

Located in the heart of Gangnam, Grand Mercure Imperial Palace Seoul Gangnam offers excellent accessibility. It is approximately 65 km from Incheon Airport, with a travel time of about 1 hour and 30 minutes by car. Public transportation is also convenient, making it easy to reach. Nearby attractions such as COEX and Dosan Park provide a variety of leisure and cultural experiences. Whether you're visiting for business or leisure, enjoy the sophisticated atmosphere of Seoul at Imperial Palace.

**BY CAR / TAXI** Take a taxi from Incheon International Airport to "Grand Mercure Imperial Palace Seoul Gangnam." The address is 640 Eonju-ro, Gangnam-gu, Seoul. The ride takes approximately 1 hour and 30 minutes.

**BY TRAIN** Public Transportation Directions to Grand Mercure Imperial Palace Seoul Gangnam

#### [From Incheon International Airport]

Take the Airport Railroad (AREX) towards Seoul Station → Transfer at Gimpo Airport Station to Line 9 → Transfer at Seonjeongneung Station to the Suin-Bundang Line → Get off at Gangnam-gu Office Station (Exit 2) → Walk 10 minutes.  
Alternatively, take the Airport Railroad (AREX) towards Seoul Station → Transfer at Gimpo Airport Station to Line 9 → Get off at Seonjeongneung Station (Exit 1) → Walk 20 minutes.

#### [Subway Access]

From Hakdong Station (Line 7, Exit 1): 8-minute walk (approx. 400m)  
From Gangnam-gu Office Station (Line 7 & Suin-Bundang Line, Exit 2): 10-minute walk (approx. 650m)

### BY BUS

#### [Airport Limousine Bus Directions]

From Incheon Airport Terminal 1  
Take KAL Limousine Bus 6703 at Stop 5B (1st Floor) → Get off at Imperial Palace Seoul

From Incheon Airport Terminal 2  
Take KAL Limousine Bus 6703 at B1 Floor → Get off at Imperial Palace Seoul

#### [Local Bus Directions]

Imperial Palace Seoul Stop: Buses 141, 242, 6703 (KAL Limousine Airport Bus)  
Sae-gwan (Customs Office) Stop: Buses 401, 242, Gangnam 08



# ROOMS

RESIDENCES HOTEL ROOMS SUITES



## RESIDENCE DELUXE

The suite features a separate bedroom, providing a tranquil and private space for rest. It is furnished with either a comfortable queen bed or two super single beds, ensuring a perfect sleep experience. The living area is complemented by a fully equipped kitchen, complete with a washing machine, allowing you to maintain your daily routine with ease. For added convenience, a clothing care system (Styler) is also provided, ensuring you look your best throughout your stay.

The spacious bathroom, designed for your relaxation, includes both a full-sized bathtub and a separate shower. This dual-option setup allows you to unwind in the way you prefer. As a special welcome, a minibar is provided free of charge on the first night of your stay.

### Room features



**Max occupancy**  
2 People



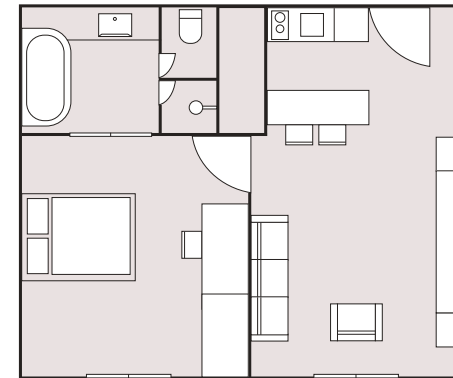
**Bed types**  
1 bedroom with 1 queen bed or 2 super single beds



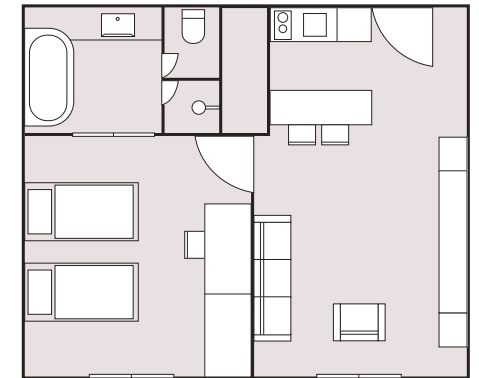
**Room size**  
53 m<sup>2</sup>



**View**  
City or Housing view



- 1 bedroom with 1 queen bed



- 1 bedroom with 2 super single beds

### Room Amenities & Equipment

WiFi | Smart TV | Tablet | Kitchen Facilities | Induction cooktop (2 burners) | Refrigerator & freezer | Washer & dryer | Clothing care system (Styler) | Electric door lock | Private safe | Slippers | Shoe Cleaner and cloth brush | Blackout curtains | Scales | Flash Light



## RESIDENCE DELUXE, IDEAL FOR FAMILY

The room features a spacious, separate bedroom that provides a peaceful retreat for the whole family. It is thoughtfully furnished with a comfortable queen bed (150x200cm) and a single bed (100x200cm), ensuring a restful night's sleep for up to three guests. The living area is complemented by a fully equipped kitchen and a washing machine, allowing you to maintain your daily routine with ease.

A clothing care system (Styler) is also provided, so you can always look your best. The spacious bathroom, equipped with both a bathtub and a separate shower, offers a convenient and comfortable space for the family to unwind. Every detail is considered to make your stay as relaxing as possible. To welcome you, a minibar is provided free of charge on the first night of your stay.

### Room features



**Max occupancy**  
3 People



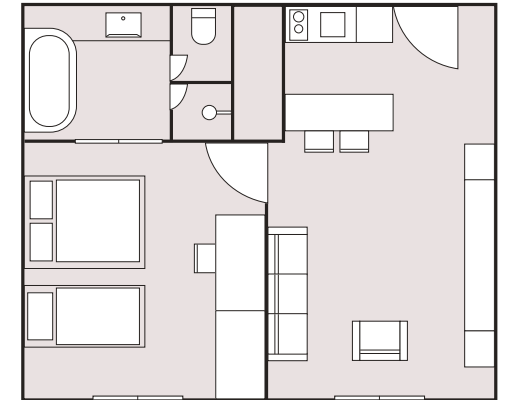
**Bed types**  
1 bedroom with 1 queen bed and 1 single bed



**Room size**  
53 m<sup>2</sup>



**View**  
City or Housing view



### Room Amenities & Equipment

WiFi | Smart TV | Tablet | Kitchen Facilities | Induction cooktop (2 burners) | Refrigerator & freezer | Washer & dryer | Clothing care system (Styler) | Electric door lock | Private safe | Slippers | Shoe Cleaner and cloth brush | Blackout curtains | Scales | Flash Light



## RESIDENCE STUDIO

The studio's seamless design allows the living, sleeping, and kitchen areas to flow together naturally, offering a highly functional and inviting space. At its center, a comfortable king bed (180x200cm) ensures a restful night's sleep. The space is complemented by a fully equipped kitchen with a washing machine, providing the freedom to enjoy a home-cooked meal or manage your daily routine with ease.

For added convenience, a clothing care system (Styler) is also provided, ensuring you are always ready for the day ahead. The well-appointed bathroom includes both a full-sized bathtub and a separate shower, offering a convenient and tranquil space to unwind. To welcome you, a minibar is provided free of charge on the first night of your stay.

### Room features



**Max occupancy**  
2 people  
(max 3 people)



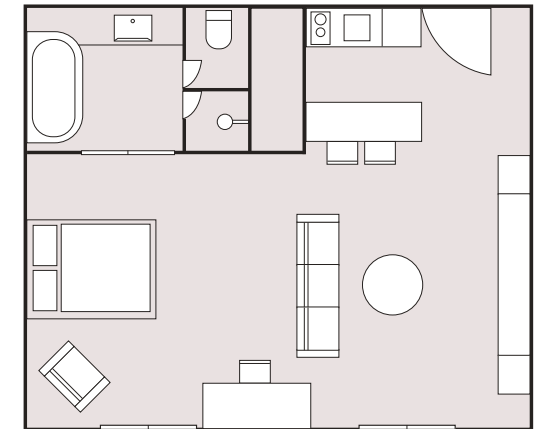
**Bed types**  
1 king bed



**Room size**  
53 m<sup>2</sup>



**View**  
City or  
Housing view



### Room Amenities & Equipment

WiFi | Smart TV | Tablet | Kitchen Facilities | Induction cooktop (2 burners) | Refrigerator & freezer | Washer & dryer | Clothing care system (Styler) | Electric door lock | Private safe | Slippers | Shoe Cleaner and cloth brush | Blackout curtains | Scales | Flash Light



## RESIDENCE PREMIER – 1 BEDROOM

Experience a recently renovated, apartment-style room featuring a separate bedroom with a king bed (180x200cm), a stylish dining area with a table and six chairs, a cozy sofa for relaxing, a fully equipped kitchen with a washing machine, a spacious bathroom with both a bathtub and a shower, and a convenient clothing care system (Styler).

Perfect for extended stays, this well-appointed space combines residential comfort with hotel-level convenience. A minibar is provided free of charge on the first night of your stay.

### Room features



**Max occupancy**  
2 people  
(max 3 people)



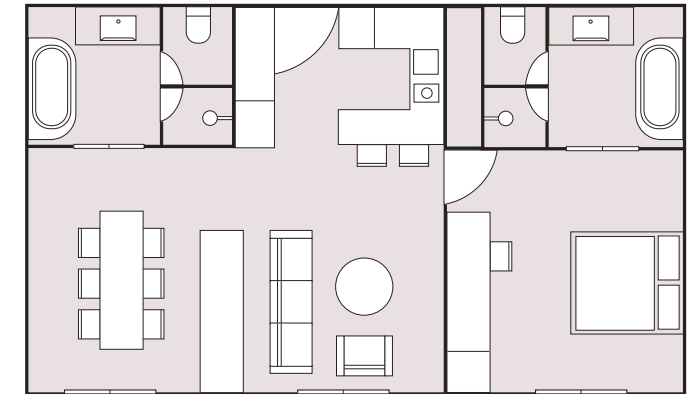
**Bed types**  
1 bedroom with  
1 king bed



**Room size**  
79m<sup>2</sup>



**View**  
City or  
Housing view



### Room Amenities & Equipment

WiFi | Smart TV | Tablet | Kitchen Facilities | Induction cooktop (2 burners) | Refrigerator & freezer | Washer & dryer | Clothing care system (Styler) | Electric door lock | Private safe | Slippers | Shoe Cleaner and cloth brush | Blackout curtains | Scales | Flash Light



## RESIDENCE PREMIER – 2 BEDROOMS

The suite's layout is meticulously planned to provide both shared social areas and personal retreats. The first bedroom features a comfortable king bed (180x200cm), while the second offers two super single beds (120x200cm), accommodating different sleeping arrangements with ease. The common areas include a cozy living room and a fully equipped kitchen with a washing machine, ensuring all the comforts of home are at your fingertips.

For added convenience, a clothing care system (Styler) is also provided. The spacious bathroom is equipped with premium amenities, providing a comfortable and convenient space for multiple guests to prepare for the day. To welcome you, a minibar is provided free of charge on the first night of your stay.

### Room features



**Max occupancy**  
4 People



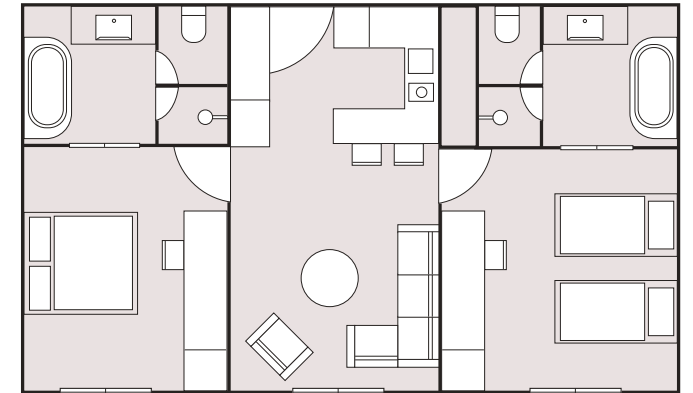
**Bed types**  
2 bedrooms with  
1 king bed and  
2 super single beds



**Room size**  
79m<sup>2</sup>



**View**  
City or  
Housing view



### Room Amenities & Equipment

WiFi | Smart TV | Tablet | Kitchen Facilities | Induction cooktop (2 burners) | Refrigerator & freezer | Washer & dryer | Clothing care system (Styler) | Electric door lock | Private safe | Slippers | Shoe Cleaner and cloth brush | Blackout curtains | Scales | Flash Light



## RESIDENCE SUITE

The Residence Suite is the hotel's only penthouse-style, modern residence accommodation, offering a spacious and refined stay ideal for families and long-stay guests. This exclusive suite features two bedrooms-one with a king bed(180x200cm) and the other with a queen bed(150x200cm)-along with a large six-person dining table and a fully equipped kitchenette for simple meal preparation. Each room, including the living area, is furnished with its own TV, providing a comfortable and convenient environment for relaxation.

With its contemporary interior design and rare residential layout, the Residence Suite delivers a premium Gangnam stay that combines home-like comfort with hotel luxury.

### Room features



**Max occupancy**  
4 People



**Bed types**  
2 bedrooms with 1 King bed and 1 queen bed



**Room size**  
89 m<sup>2</sup>



**View**  
City view



### Room Amenities & Equipment

WiFi | Smart TV | Tablet | Kitchen Facilities | Induction cooktop (2 burners) | Refrigerator & freezer | Washer & dryer | Clothing care system (Styler) | Electric door lock | Private safe | Slippers | Shoe Cleaner and cloth brush | Blackout curtains | Scales | Flash Light



### Room Amenities & Equipment

WiFi | Smart TV | Tablet | Electric door lock | Private safe | Slippers | Shoe Cleaner and cloth brush | Blackout curtains Scales | Flash Light

## SUPERIOR

This thoughtfully designed accessible room features a queen bed (150x200cm) and is carefully laid out to provide ease of movement and comfort for guests with mobility needs. With step-free access and a fully accessible bathroom, the room ensures a safe, seamless, and stylish stay without compromising on comfort or convenience.

### Room features



**Max occupancy**  
2 people  
(max 3 people)



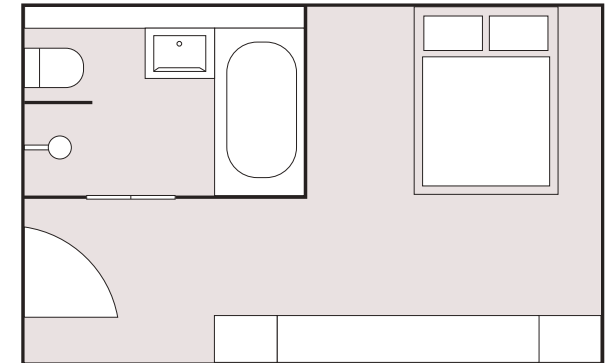
**Bed types**  
1 king bed or  
2 super single beds



**Room size**  
34m<sup>2</sup>



**View**  
City or  
Housing view





## DELUXE

The Deluxe Room at Grand Mercure Imperial Palace Seoul Gangnam offers either a kingbed (180x200cm) or super single beds (125x210cm) depending on the room type, along with an attractive city skyline view. With complimentary high-speed Wi-Fi, a smart TV, and a spacious work area, this room provides an ideal environment for both business and leisure travelers.

After a long day, guests can unwind in the elegant bathroom equipped with premium amenities for a comfortable and relaxing experience.

### Room features



**Max occupancy**  
2 people  
(max 3 people)



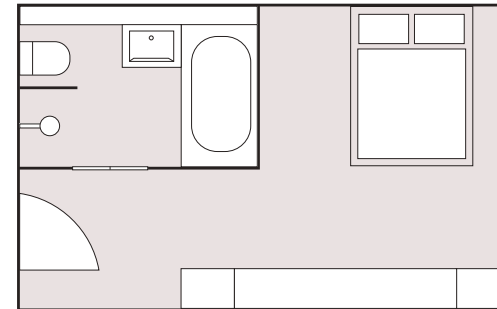
**Bed types**  
1 king bed or  
2 super single beds



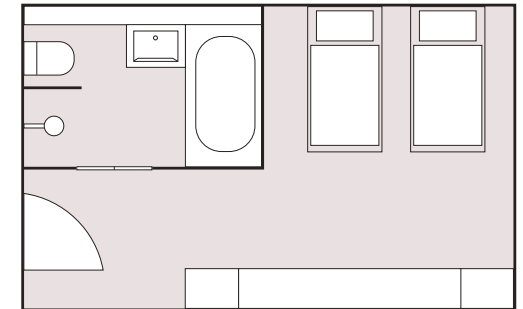
**Room size**  
37m<sup>2</sup>



**View**  
City or  
Housing view



- 1 king bed



- 2 super single beds

### Room Amenities & Equipment

WiFi | Smart TV | Tablet | Electric door lock | Private safe | Slippers | Shoe Cleaner and cloth brush | Blackout curtains Scales | Flash Light



## DELUXE, PANORAMIC VIEW

Depending on the bed type, the room is furnished with either a king bed (180x210cm) or two super single beds (125x210cm), and offers expansive panoramic skyline views from the upper floors. With complimentary high-speed Wi-Fi, a smart TV, and a spacious work area, the room provides an ideal setting for both business and leisure travelers.

After a long day, guests can unwind in a cozy bathroom equipped with premium amenities for a relaxing and comfortable stay. The Deluxe Panoramic View Room also offers a complimentary minibar, adding an extra touch of convenience and luxury. Experience true comfort and serenity in the heart of Gangnam at Grand Mercure Imperial Palace Seoul Gangnam, one of Seoul's distinguished 5-star hotels.

### Room features



**Max occupancy**  
2 people



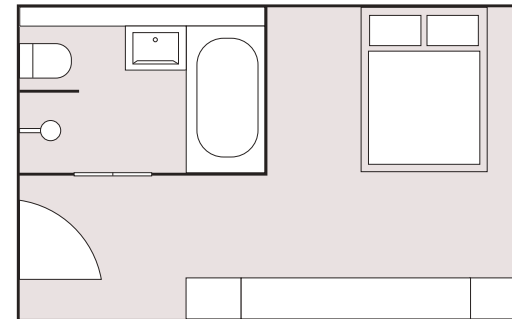
**Bed types**  
1 king bed or  
2 super single beds



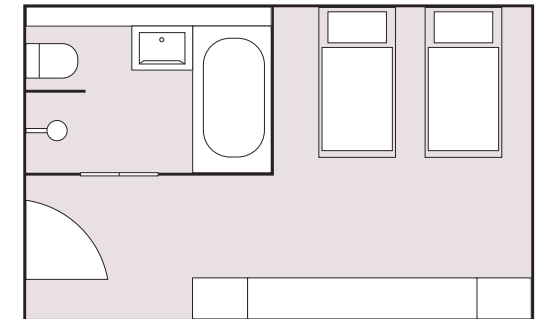
**Room size**  
37m<sup>2</sup>



**View**  
City or  
Housing view



- 1 king bed



- 2 super single beds

### Room Amenities & Equipment

WiFi | Smart TV | Tablet | Electric door lock | Private safe | Slippers | Shoe Cleaner and cloth brush | Blackout curtains Scales | Flash Light



## EXECUTIVE

This elegant room at Grand Mercure Imperial Palace Seoul Gangnam offers either a king bed (180x200cm) or two single beds (100x200cm), depending on the room type. Premium bedding and carefully curated furnishings ensure exceptional comfort and a deep night's sleep. Guests can enjoy expansive Gangnam skyline views, along with a bathroom equipped with both a bathtub and a separate shower.

Complimentary access to the traditional Korean-style sauna is also included. Guests staying in this room enjoy exclusive access to the Club Imperial Lounge, featuring day snacks, happy hour dining, buffet breakfast at Familia, private check-in and check-out, and complimentary use of a meeting room for up to two hours. This room is an ideal choice for travelers seeking a refined blend of comfort, premium service, and an authentic Korean hospitality experience at a luxury Seoul hotel.

### Room features



**Max occupancy**  
2 people



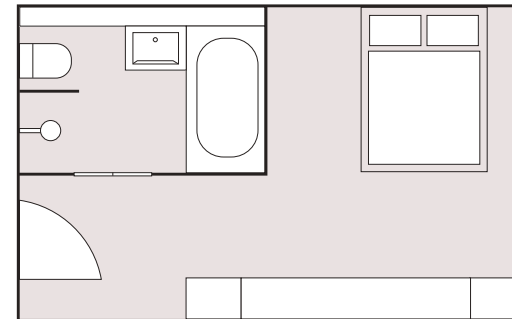
**Bed types**  
1 king bed or  
2 single beds



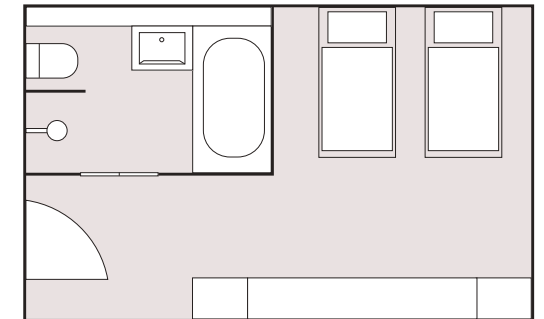
**Room size**  
37m<sup>2</sup>



**View**  
City or  
Housing view



- 1 king bed



- 2 super single beds

### Room Amenities & Equipment

WiFi | Smart TV | Tablet | Electric door lock | Private safe | Slippers | Shoe Cleaner and cloth brush | Blackout curtains Scales | Flash Light



## DELUXE SUITE, CORNER

The Deluxe Suite Corner features a spacious separate living room and bedroom, offering enhanced privacy and comfort. The bedroom is furnished with a super king bed (200x210cm), while antique-inspired furnishings and elegant décor create a refined atmosphere. From the upper floors, guests can enjoy stunning panoramic city views, adding to the suite's luxurious appeal.

At Grand Mercure Imperial Palace Seoul Gangnam, the Deluxe Suite Corner provides exceptional comfort, generous space, and premium services exclusive to suite guests. It is an ideal choice for travelers seeking an elegant and sophisticated stay in the heart of Gangnam.

### Room features



**Max occupancy**  
2 people  
(max 3 people)



**Bed types**  
1 super king bed



**Room size**  
73m<sup>2</sup>



**View**  
City or  
Housing view



### Room Amenities & Equipment

WiFi | Smart TV | Tablet | Electric door lock | Private safe | Slippers | Shoe Cleaner and cloth brush | Blackout curtains Scales | Flash Light



## DELUXE SUITE, DUPLEX

Experience elevated luxury and exceptional privacy in the Deluxe Suite Duplex at Grand Mercure Imperial Palace Seoul Gangnam. Located on the uppermost floors, this two-level suite features a super king bed(200x210cm) along with spacious, separate living and dining areas—perfect for business travelers and long-stay guests seeking comfort and independence.

The lower-level bedroom offers deep rest with premium bedding, while the upper level features a private bathtub, creating an ideal retreat for relaxation. This duplex suite is the perfect choice for guests looking for a spacious, upscale accommodation in a 5-star hotel in Gangnam.

### Room features



**Max occupancy**  
2 people



**Bed types**  
1 super king bed



**Room size**  
56m<sup>2</sup>



**View**  
City or  
Housing view



### Room Amenities & Equipment

WiFi | Smart TV | Tablet | Electric door lock | Private safe | Slippers | Shoe Cleaner and cloth brush | Blackout curtains Scales | Flash Light



## DELUXE SUITE, DUPLEX, IDEAL FOR FAMILY

Experience elevated comfort in the Duplex Deluxe Suite, located on the top floors of the hotel. This spacious two-level suite features one super king bed (200x210cm) and two single beds(100x200cm), accommodating up to four guests—perfect for families or friends traveling together.

The suite showcases elegant antique furnishings and offers expansive skyline views of Gangnam from its elevated floors.

A well-appointed bathroom with both a bathtub and shower further enhances your stay with added convenience and relaxation.

### Room features



**Max occupancy**  
4 People



**Bed types**  
1 super king bed and  
2 single beds



**Room size**  
56m<sup>2</sup>



**View**  
City or  
Housing view



### Room Amenities & Equipment

WiFi | Smart TV | Tablet | Electric door lock | Private safe | Slippers | Shoe Cleaner and cloth brush | Blackout curtains Scales | Flash Light



## PREMIER SUITE

Experience exceptional comfort in the Premier Suite, featuring the hotel's largest Family King bed (250x210cm). Elegant antique furnishings and expansive high-floor skyline views create a luxurious ambiance, while premium bedding ensures a restful night's sleep. State-of-the-art in-room amenities and upscale bathroom products further elevate your stay.

The Premier Suite at Grand Mercure Imperial Palace Seoul Gangnam is the ideal choice for discerning guests seeking true value in a luxury hotel in Seoul. Enjoy unforgettable moments in a suite that combines the warmth of home with refined, premium hotel service.

### Room features



**Max occupancy**  
4 People



**Bed types**  
1 family king bed



**Room size**  
65m<sup>2</sup>



**View**  
City or  
Housing view



### Room Amenities & Equipment

WiFi | Smart TV | Tablet | Electric door lock | Private safe | Slippers | Shoe Cleaner and cloth brush | Blackout curtains Scales | Flash Light



## IMPERIAL FAMILY SUITE

The Imperial Family Suite is the hotel's one and only European-style penthouse, offering an iconic and spacious stay ideal for families or groups. Featuring two bedrooms with one king bed(180x200cm) and two single beds(100x200cm), this suite comfortably accommodates up to four guests. The large living area includes a six-person dining table, while the bathroom provides both a shower booth and a bathtub for added comfort.

Guests staying in the Imperial Family Suite also enjoy access to the fitness center, and indoor pool—creating a premium Gangnam stay unlike any other.

### Room features



**Max occupancy**  
4 People



**Bed types**  
2 bedrooms with 1 king  
bed and 2 single beds



**Room size**  
84 m<sup>2</sup>



**View**  
City view

### Room Amenities & Equipment

WiFi | Smart TV | Tablet | Electric door lock | Private safe | Slippers | Shoe Cleaner and cloth brush | Blackout curtains Scales | Flash Light



## IMPERIAL SUITE, DUPLEX

This signature suite—the second largest in the hotel—features an elegant duplex layout and comfortably accommodates up to four guests with its super king bed(200x210cm) and two single beds(100x200cm).

The suite showcases antique-inspired interiors and offers expansive high-floor skyline views of Gangnam, creating a truly elevated stay.

A well-appointed bathroom with both a bathtub and a separate shower adds to the comfort, allowing guests to unwind in complete relaxation.

### Room features



**Max occupancy**  
4 People



**Bed types**  
1 family king bed and  
2 single beds



**Room size**  
129m<sup>2</sup>



**View**  
City view



### Room Amenities & Equipment

WiFi | Smart TV | Tablet | Electric door lock | Private safe | Slippers | Shoe Cleaner and cloth brush | Blackout curtains Scales | Flash Light



## ROYAL SUITE

The Royal Suite is the hotel's one-and-only top-tier luxury accommodation, offering an exceptional blend of refined antique charm and classic elegance.

Featuring an expansive Family King bed (250x210cm), two washrooms, a deep soaking bathtub, and sweeping high-floor skyline views of Gangnam, this suite delivers unmatched grandeur and sophistication.

Curated artwork and timeless interior details elevate every corner of the space, creating a truly distinguished stay unique to Grand Mercure Imperial Palace Seoul Gangnam.

### Room features



**Max occupancy**  
2 People



**Bed types**  
1 family king bed



**Room size**  
202m<sup>2</sup>



**View**  
City or  
Housing view



### Room Amenities & Equipment

WiFi | Smart TV | Tablet | Electric door lock | Private safe | Slippers | Shoe Cleaner and cloth brush | Blackout curtains Scales | Flash Light



# DINING

BUFFET FAMILIA CHEONSAN CAFE DELMAR THE BAR



## Lunch / Dinner

- \* 7 live stations
- ‘Grill Station’ where you can grill the best meats like LA ribs, prime ribs, and lamb ribs on the spot
- ‘Sushi’ & ‘Sashimi’ where you can enjoy a variety of fresh seafood like tuna and seasonal seafood
- ‘Pizza’ where you can feel the flavor of Italy and ‘Pasta’ cooked al dente
- Various ‘Fried Dishes’ where you can enjoy a crispy texture
- ‘Oriental Noodles’ where you can enjoy a warm and deep flavor with various noodle dishes cooked on the spot
- \*A selection of desserts that stand out for their luxuriousness

## BUFFET FAMILIA

Begin an exceptional culinary journey at Buffet Familia, the signature buffet restaurant of Grand Mercure Imperial Palace Seoul Gangnam. Through expansive glass façades, a serene urban garden unfolds before you, creating a bright and relaxing atmosphere filled with natural light. More than just a buffet, Familia is an immersive dining destination featuring seven live cooking stations where chefs prepare dishes right before your eyes.

Enjoy a diverse selection of global cuisines made fresh daily—from Asian specialties and Western classics to Mediterranean seafood and traditional Korean home-style dishes. Premium desserts, a curated salad bar, and dedicated grill and specialty zones further enhance the experience for every palate. With spacious seating, an open layout, and private dining rooms, Familia is ideal for business gatherings, family meals, friendly meetups, and memorable celebrations. Serving breakfast, lunch, and dinner buffets, the restaurant offers a rich variety of dishes throughout the day, ensuring a satisfying dining experience from morning to evening.



### Max capacity

200 seats / 5 private rooms



### OPENING HOURS

Breakfast : 6:30 AM – 10:00 AM

Lunch : 12:00 PM – 2:30 PM

Dinner : 6:00 PM – 9:30 PM

\* Restaurant operations may be run in one continuous seating or split into two seatings (first and second), depending on reservation demand.



### Venue size

889m<sup>2</sup> (269py)



### PRICE (KRW)

#### Breakfast

Adult: KRW 65,000 / Child: KRW 32,500

#### Weekday Lunch

Adult: KRW 145,000 / Child: KRW 72,500

#### Weekday Dinner / Weekend Lunch & Dinner

Adult: KRW 180,000 / Child: KRW 90,000

## CHEONSAN

Discover a distinctive culinary experience at Grand Mercure Imperial Palace Seoul Gangnam's Cheonsan Chinese Restaurant. Here, sophisticated modernism coexists with traditional elegance, as our master chefs re-interpret the essence of China's four great cuisines with a contemporary touch. Each dish is a symphony of deep, rich flavors, meticulously prepared with the finest ingredients and the chef's masterful dedication.

Cheonsan offers special spaces for guests seeking a private dining experience. In our private rooms, boasting striking openness through full glass windows, you can enjoy a refined and cozy atmosphere while savoring your meal with unobstructed city views, free from external disturbances. These spaces are perfect for any occasion, be it a business meeting, family gathering, or a cherished anniversary, adding an unparalleled touch of elegance.

If you are looking for the best Chinese restaurant in Seoul Gangnam, embark on an unforgettable culinary journey at Cheonsan, one of the esteemed hotel restaurants. A special experience blending the authentic tastes of mainland China with modern elegance awaits you.



**Max capacity**  
115 seats  
14 private rooms



**Venue size**  
509m<sup>2</sup> (154py)



**OPENING HOURS**  
**LUNCH :**  
12:00 PM - 3:00 PM  
**DINNER :**  
weekdays 6:00 PM - 10:00 PM  
weekends 6:00 PM - 9:30 PM





## 1ST YEAR BIRTHDAY(DOL JANCHI)

Plan your child's precious first birthday in a private and elegant setting at Grand Mercure Imperial Palace Seoul Gangnam.

Our dedicated venues for small family gatherings, combined with attentive service, ensure a truly memorable celebration.

### Cheongdo

A private room featuring floor-to-ceiling windows with an open city view

Capacity: Up to 12 guests (Up to 10 guests with traditional table setup)

Minimum spend: KRW 1,000,000

### Nanjing

A cozy private room ideal for family celebrations and small-scale events

Capacity: Up to 26 guests (Up to 24 guests with traditional table setup)

Minimum spend: KRW 1,500,000

Projector available

\* Course menu is available when using the above private rooms.

**Reservation :** +82-2-3440-8141 / **Location :** Cheonsan (2F)





## CAFE DELMAR

Discover a special place where timeless antique sensibility harmonizes with modern elegance at Cafe Delmar, located in the lobby of Grand Mercure Imperial Palace Seoul Gangnam. As seen in the picture, dazzling chandeliers, classic furnishings, and intricate decorations combine to create an atmosphere like a European palace. This is more than just a cafe; it's an urban oasis that offers true relaxation and inspiration.

You can enjoy a diverse menu featuring aromatic coffee brewed from premium beans and exquisite premium desserts meticulously crafted by professional pastry chefs, as well as selected teas and light snacks. From a leisurely morning coffee to a sweet afternoon tea, or a quiet evening conversation, it offers perfect moments at any time of day. Its warm, cozy, yet distinguished atmosphere is ideal for business meetings, friendly gatherings, or as a Seoul Gangnam date spot.

Cafe Delmar, one of the Grand Mercure Imperial Palace Gangnam restaurants, is the optimal choice for those looking to pause from their busy lives and find their own moments of tranquility.



**Max capacity**  
100 seats



**Venue size**  
532m<sup>2</sup> (161py)



**OPENING HOURS**  
SUN – THU 9:00 AM - 10:00 PM  
FRI – SAT 9:00 AM - 11:00 PM  
Dec 11(Fri) - Dec 31(Thu)  
Daily 9:00 AM – 11:00 PM  
Deli Amador (Bakery)  
Daily 8:00 AM – 9:00 PM

| DINING |



## THE BAR

Experience the city's most sophisticated and private atmosphere. Visit The Bar at Grand Mercure Imperial Palace Seoul Gangnam. Its modern interior is stylish. Elegant lighting blends with comfortable seating. A well-appointed bar counter completes the space. It's comfortable yet elegant for gatherings. It's more than just a bar. It offers true relaxation and rejuvenation. Find your special place here after a busy day. Enjoy a wide selection of beverages. Discover diverse premium wines curated by experts. Savor fine whiskies with aged flavors. Try inventive cocktails crafted by professional bartenders.

Each drink is prepared with meticulous care and dedication, perfectly paired with gourmet snacks. The ambiance is calm and quiet. It's ideal for a casual drink after a business meeting. Spend an unforgettable evening here. It's a perfect Gangnam date spot with a loved one. The Bar stands out among Grand Mercure Imperial Palace Seoul Gangnam's dining facilities. It's an excellent choice. It suits those who value personal space.



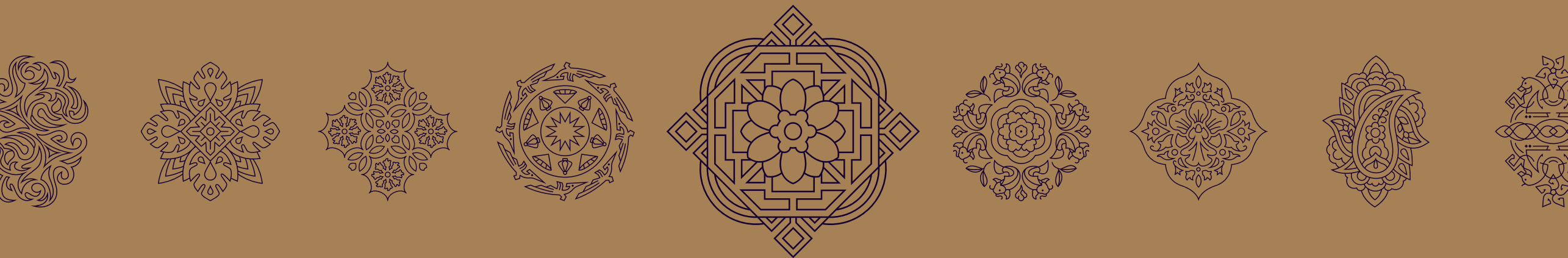
**Max capacity**  
50 seats  
5 private rooms



**Venue size**  
228m<sup>2</sup> (69py)



**OPENING HOURS**  
MON - SAT 6:00 PM - 1:00 AM  
(Closed on Sundays and public holidays)



# FACILITIES

CLUB IMPERIAL LOUNGE   PREMIER LOUNGE   FITNESS CLUB & INDOOR POOL & SAUNA  
TRADITIONAL CULTURE LOUNGE   BUSINESS CENTER   OUTDOOR POOL   ARCADE



## CLUB IMPERIAL LOUNGE

Located on the 20th floor, the Club Imperial Lounge offers an exclusive sanctuary. Designed with the timeless elegance of traditional Korean hanok architecture, this sophisticated space harmoniously blends historical charm with modern luxury.

It provides a truly comfortable retreat reserved exclusively for our Executive guests, perfect for both profound relaxation and seamless business productivity.

- Location : 20F
- Price : KRW 132,000 per person
- Operation hour 7:00 AM - 10:00 PM
- Breakfast 6:30AM - 10:00AM (1st floor buffet)
- Day snacks 12:00PM - 2:30PM  
(12:00PM - 2:00PM, during the two-session operation)
- Happy Hour 5:30PM - 7:30PM  
(5:00PM - 6:30PM / 7:30PM - 9:00PM, during the two-session operation)
- Private check-in and check-out 2 hours of free meeting room usage
- Available for guests aged 17 and above



## PREMIER LOUNGE

The Premier Lounge offers a comfortable and relaxing atmosphere, exclusively available to serviced residence guests.



### OPENING HOURS

Location 10F  
Operating Hours 7:00AM~10:00AM  
Day snacks 3:00PM~7:30PM

\*Exclusively for long-term stay guests \* Available for guests aged 16 and above





## FITNESS CLUB

A true first-class fitness club goes beyond the appearance of perfection, offering a space for refined social gatherings and ultimate relaxation.

### Fitness Center

- Operating Hours: 6:00 AM - 9:30 PM
- Regular Closure: First Tuesday of every month, Lunar New Year's Day, and Chuseok Day
- Age Policy: Guests must be 16 years of age or older to enter. We recommend elderly guests be accompanied by a guardian. Please wear indoor training shoes. (Outdoor shoes are not permitted.)
- Lockers are available when renting workout attire.
- Showers are available in the fitness center and in-room facilities.

### Indoor Pool

- Operating Hours: 6:00 AM - 9:30 PM
- Regular Closure: First Tuesday of every month, Lunar New Year's Day, and Chuseok Day
- Guests with infants and toddlers may use the pool from 9:00 AM to 7:00 PM (4 time slots)
- Session 1. 9:00 AM - 11:00 AM | Session 2. 11:00 AM - 1:00 PM
- Session 3. 2:00 PM - 4:00 PM | Session 4. 4:00 PM - 7:00 PM
- For safety reasons, please do not wear in-room slippers.
- Guests with excessive tattoos must cover them with a rash guard or sportswear to enter. As we do not have a dedicated changing room, please wear swimwear and a robe from your guestroom.
- All guests must wear swim caps.
- Infants and toddlers must wear waterproof diapers.
- Please do not bring outside food and beverages; you may only bring bottled water.
- Guests should store personal belongings in a rental basket.
- Kindly note that guests can use the pool only during their stay.





## TRADITIONAL CULTURE LOUNGE / BUSINESS CENTER / OUTDOOR POOL / ARCADE

### TRADITIONAL CULTURE LOUNGE

The Traditional Culture Lounge offers a variety of programs featuring hands-on activities focused on Korean traditional culture, including traditional games.

**Location :** 3F | **Operating Hours:** Every day 9:00 AM - 10:00 PM

### BUSINESS CENTER

The Business Center provides cutting-edge IT facilities as well as a pleasant environment for your successful business through differentiated services and board rooms equipped with a projector and a smart board.

#### Capacity

Board Room 1-10 persons | Board Room 2-8 persons | Board Room 3-6 persons

**Location:** 3F

Rental equipment and office supplies  
Ultra-high-speed Internet and Wi-Fi connection | 65-inch smart board and LED TV for conferences | Flexible environment for each conference | Office supplies for conferences | The latest conference system and camera for video conferences | Polycom's group conference call system | The latest laptops | Beam projector

### OUTDOOR POOL

The outdoor pool operates during the summer season in July and August, offering relaxing swimming moments throughout your stay. Food and beverage service is also available.

**Location :** 3F / Summer season only

### ARCADE

#### La Cométe

La Cométe, elegant flower boutique elevates events, weddings, and parties with European-style floral arrangements crafted by professional florists.

**Business Hours:**  
9:00AM-7:00PM  
**Inquiry TEL** +82 2 3440 8299

#### Basel

A premium jewelry boutique offering refined, high-quality jewelry and accessories, meticulously curated and inspected by expert professionals.

**Business Hours:**  
10:00 AM - 6:00 PM  
**Inquiry TEL** +82 2 3440 8290

#### SUN-NATIONAL TAILOR

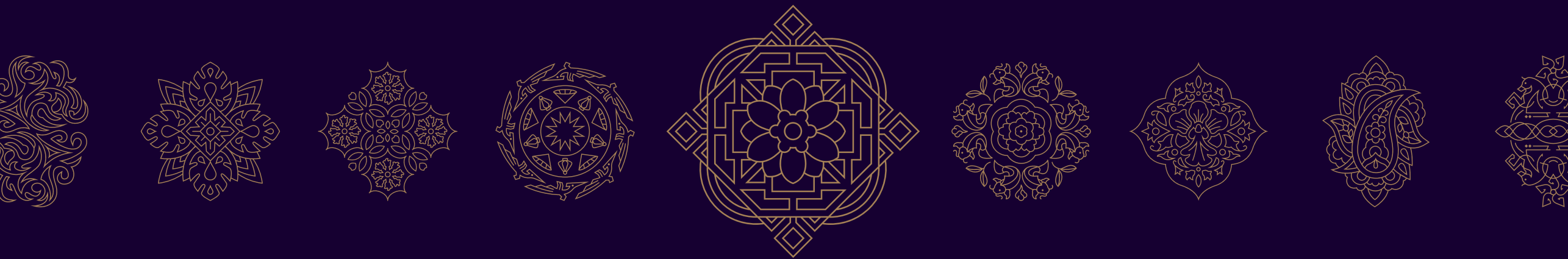
A tailor shop with over 30 years of heritage, offering masterfully crafted, high-quality suits that cannot be replicated.

**Business Hours:** 9:00 AM - 8:00 PM  
**Inquiry TEL** +82 2 3440 8295

#### IP Barber Shop

A premium aesthetic salon where you can heal yourself through professional haircut and scalp care services.

**Business Hours:** 8:30 AM - 9:00 PM  
**Inquiry TEL** +82 2 3440 8297



# WEDDING & MEETING

WEDDING FAMILY EVENTS CORPORATE MEETINGS



## WEDDING

Make your dream wedding a reality at Grand Mercure Imperial Palace Seoul Gangnam. Grand yet delicately designed banquet hall boasts an elegance that fulfills every couple's dream. Elegant lighting and sophisticated floral decoration illuminate the aisle, leaving a profound impression on your guests. We provide flexible spaces. Our state-of-the-art facilities flawlessly execute weddings. We cater to any scale or style. Host large-scale events or private intimate ceremonies. Our premium wedding banquet menus offer a feast for the senses.

They combine fresh ingredients with the chef's masterful artistry. We provide guests with an unforgettable culinary experience. Our experienced wedding specialist team coordinates every detail. They assist from initial consultation to the wedding day. We support you in achieving an unforgettable, perfect wedding.



**DIMENSION**  
30(W) \* 23(L) \* 5(H)



**M<sup>2</sup>**  
690



**BANQUET**  
320 guests



**CONTACT**  
+82-2-3440-8100



## FAMILY EVENTS

Plan a meaningful family celebration in a private, modern setting at Grand Mercure Imperial Palace Seoul Gangnam.

Our dedicated venues accommodate gatherings from intimate groups of 50 to elegant celebrations of up to 200 guests.

Paired with attentive, personalized service, every occasion becomes truly memorable.

Reservation : +82-2-3440-8100

Location : Merak, Megrez (2F)





## SELENA HALL

A Distinguished Venue for Successful Corporate Meetings and Events

The Selena Hall at Grand Mercure Imperial Palace Seoul Gangnam is designed to impress. It comfortably accommodates up to 500 guests. This makes it a versatile venue for events of varying scales. We equip this grand hall with state-of-the-art modern sound systems. These ensure crystal-clear acoustics for every presentation or speech. The hall also features highly versatile lighting.

This allows you to perfectly set the mood for any occasion. This combination truly creates an ideal space. Host large corporate gatherings here. Conduct impactful seminars. Arrange sophisticated social events. The Selena Hall adapts seamlessly to your specific needs. It promises a successful and memorable experience.



**DIMENSION**  
30(W) \* 23(L) \* 5(H)



**M<sup>2</sup>**  
690



**BANQUET**  
350 guests



**CLASS**  
315 guests



**THEATER**  
500 guests



**RECEPTION**  
300 guests



**U-SHAPE**  
48 guests



**HOLLOW**  
66 Guests



## MERAK

Discover Merak meeting room, a versatile and elegantly designed space at Grand Mercure Imperial Palace Seoul Gangnam. Our Merak Hall offers flexible spaces.

It accommodates 20 to 150 guests. We designed it with a contemporary sensibility. These sophisticated halls provide an ideal setting. They suit mid- to small-scale business meetings. You can host impactful corporate presentations.

They are also perfect for refined banquets and other professional gatherings. The modern aesthetic and thoughtful layout ensure a productive, comfortable environment for all attendees. Thus, Merak meeting room stands as a prime choice for your next event in Seoul Gangnam.



**DIMENSION**  
19(W) \* 15(L) \* 3(H)



**M<sup>2</sup>**  
277



**BANQUET**  
150 guests



**CLASS**  
150 guests



**THEATER**  
240 guests



**RECEPTION**  
150 guests



**U-SHAPE**  
45 guests



**HOLLOW**  
60 Guests



## MEGREZ

Discover Megrez Meeting Room, the premier choice for your small-scale meeting and intimate business events at Grand Mercure Imperial Palace Seoul Gangnam.

Designed with a contemporary sensibility, our Megrez Meeting Room offers a versatile space perfectly accommodating between 20 and 60 guests. Indeed, this sophisticated venue provides an ideal setting for focused discussions, impactful presentations, and various other professional gatherings, ensuring a productive yet comfortable environment for all attendees.

Furthermore, its modern aesthetic and thoughtful layout are specifically tailored to enhance engagement and collaboration for smaller groups in Seoul.



**DIMENSION**  
12(W) \* 5.6(L) \* 2.4(H)



**M<sup>2</sup>**  
67



**BANQUET**  
40 guests



**CLASS**  
42 guests



**THEATER**  
60 guests



**RECEPTION**  
30 guests



**U-SHAPE**  
27 guests



**HOLLOW**  
30 Guests



## IMPERIAL MEMBERSHIP

Experience enhanced comfort and exclusive benefits with the premium Imperial Membership of Grand Mercure Imperial Palace Seoul Gangnam. Choose from three thoughtfully curated tiers designed to complement your lifestyle.

### Platinum

Our most prestigious tier, offering the highest level of benefits including complimentary stays and extensive facility privileges.

**Price:** KRW 1,430,000

**Room Benefits:**

- 1 complimentary night in Hotel Deluxe
- 1 weekday complimentary night in Residence Deluxe
- 1 complimentary night in Deluxe Suite, Duplex (Club Lounge included)
- 2 upgrade coupons for Deluxe Suite(Duplex/Corner) (Room only)

**Dining Benefits:** 1 Buffet Familia dining voucher for 2

**Other Benefits:**

- 4 Fitness & Sauna passes
- 4 Sauna 50% discount passes
- Six KRW 50,000 vouchers (applicable to rooms and dining)
- Valet service up to 5 times per month

**Discounts:**

- 15% off rooms, 5% off room packages
- 10% off bar (Bottle 20% on Saturdays)
- 10% off bakery/café
- 20–25% off buffet
- 5% off banquet food and beverage

### Signature

A well-balanced membership offering both room and dining privileges at excellent value.

**Price:** KRW 770,000

**Room Benefits:**

- 1 complimentary night in Hotel Deluxe
- 1 weekday complimentary night in Residence Deluxe
- 2 upgrade coupons for Deluxe Suite(Duplex/Corner) (Room only)

**Dining Benefits:** 1 Buffet Familia dining voucher for 2

**Other Benefits:**

- 2 Sauna passes
- Two KRW 50,000 vouchers
- 2 Sauna 50% discount passes
- Valet service up to 3 times per month

**Discounts:** Same as Platinum tier

### Flavour

Perfect for guests who love dining experiences, offering attractive F&B-focused benefits.

**Price:** KRW 550,000

**Dining Benefits:** 1 Buffet Familia dining voucher for 2

**Other Benefits:** Four KRW 50,000 vouchers / Valet service up to 3 times per month

**Discounts:** 15–20% off buffet 10% off bar (Bottle 20% on Saturdays)/ 5% off banquet F&B/10% off bakery/café



GRAND MERCURE

IMPERIAL PALACE  
SEOUL GANGNAM